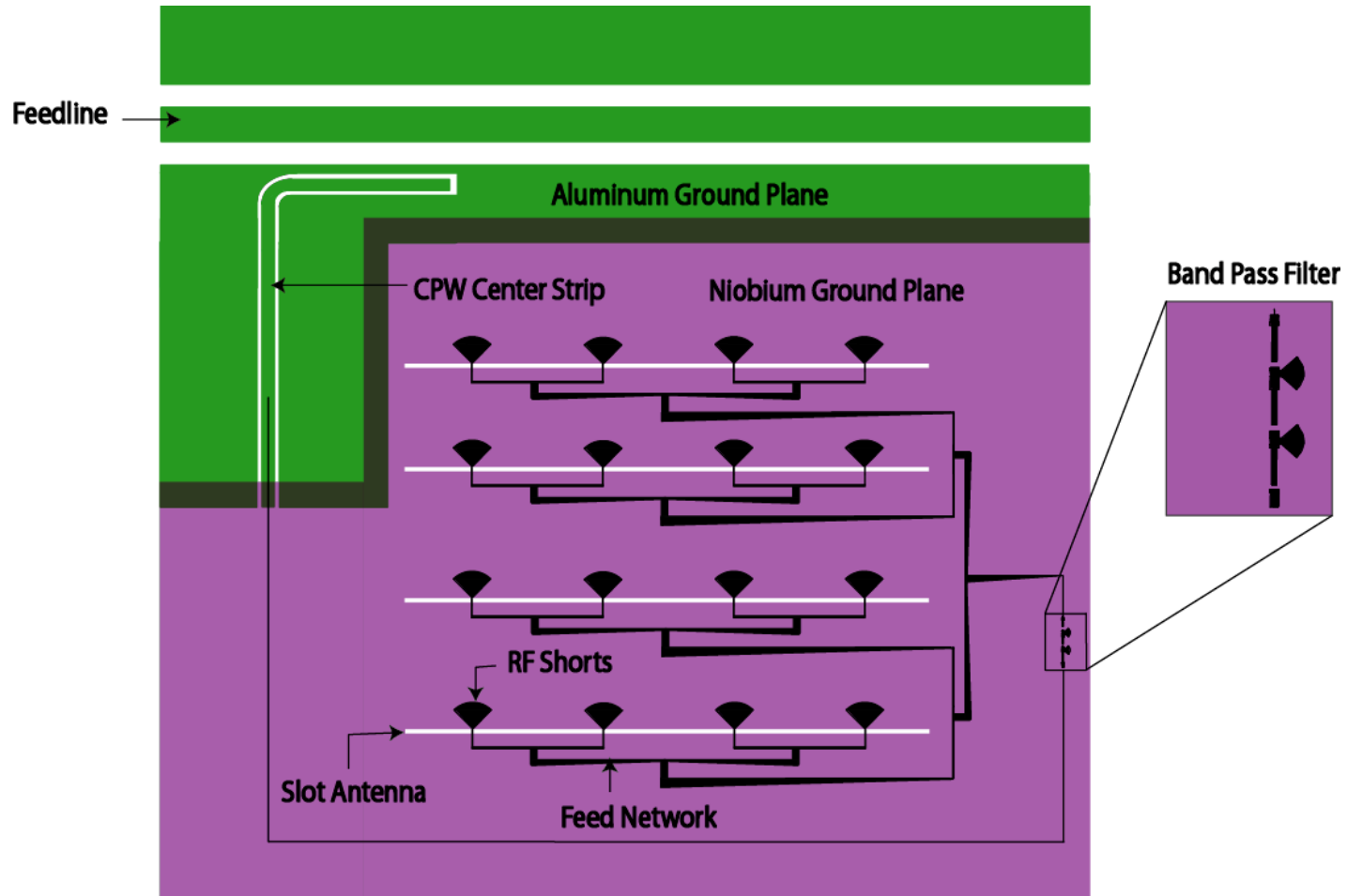


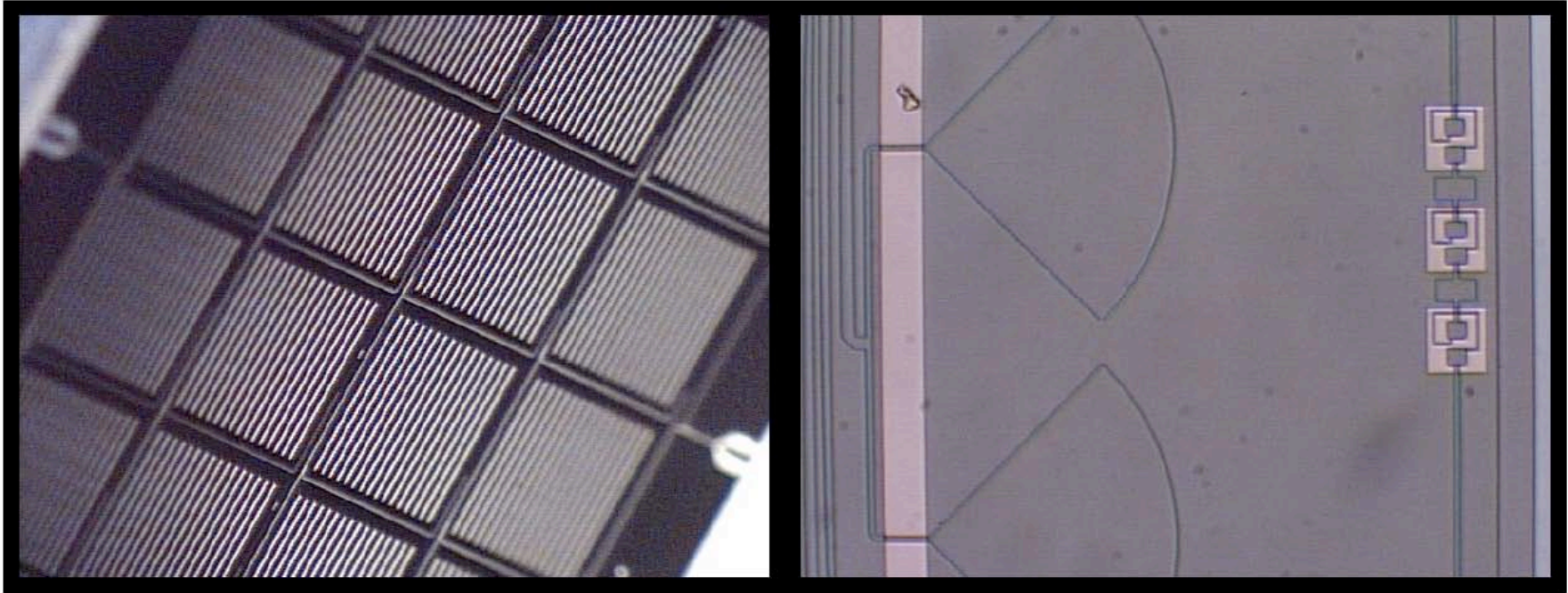
MKID Demonstration Camera

James Schlaerth
University of Colorado



Antenna Coupling of MKIDs

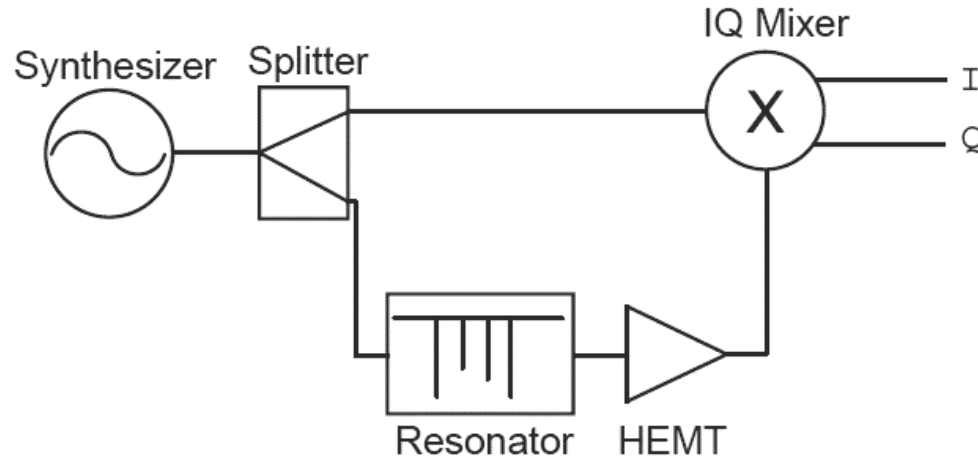




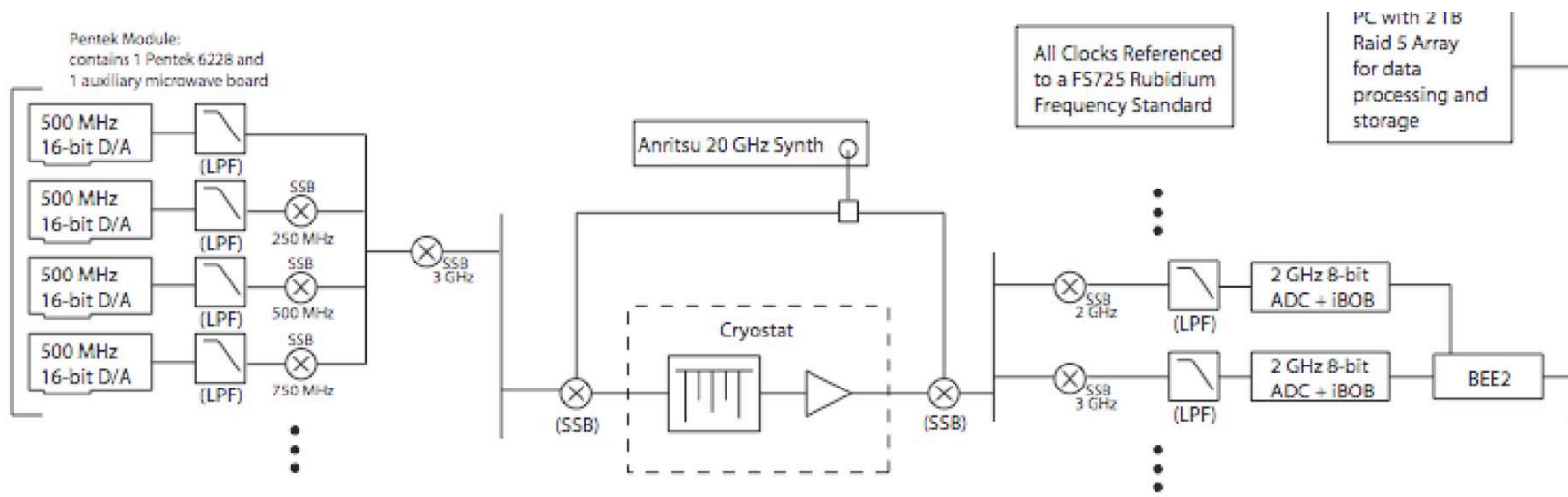
16 pixels on the chip, each feeding two resonators

Close-up of on-chip filters, on feedline from antenna to resonator

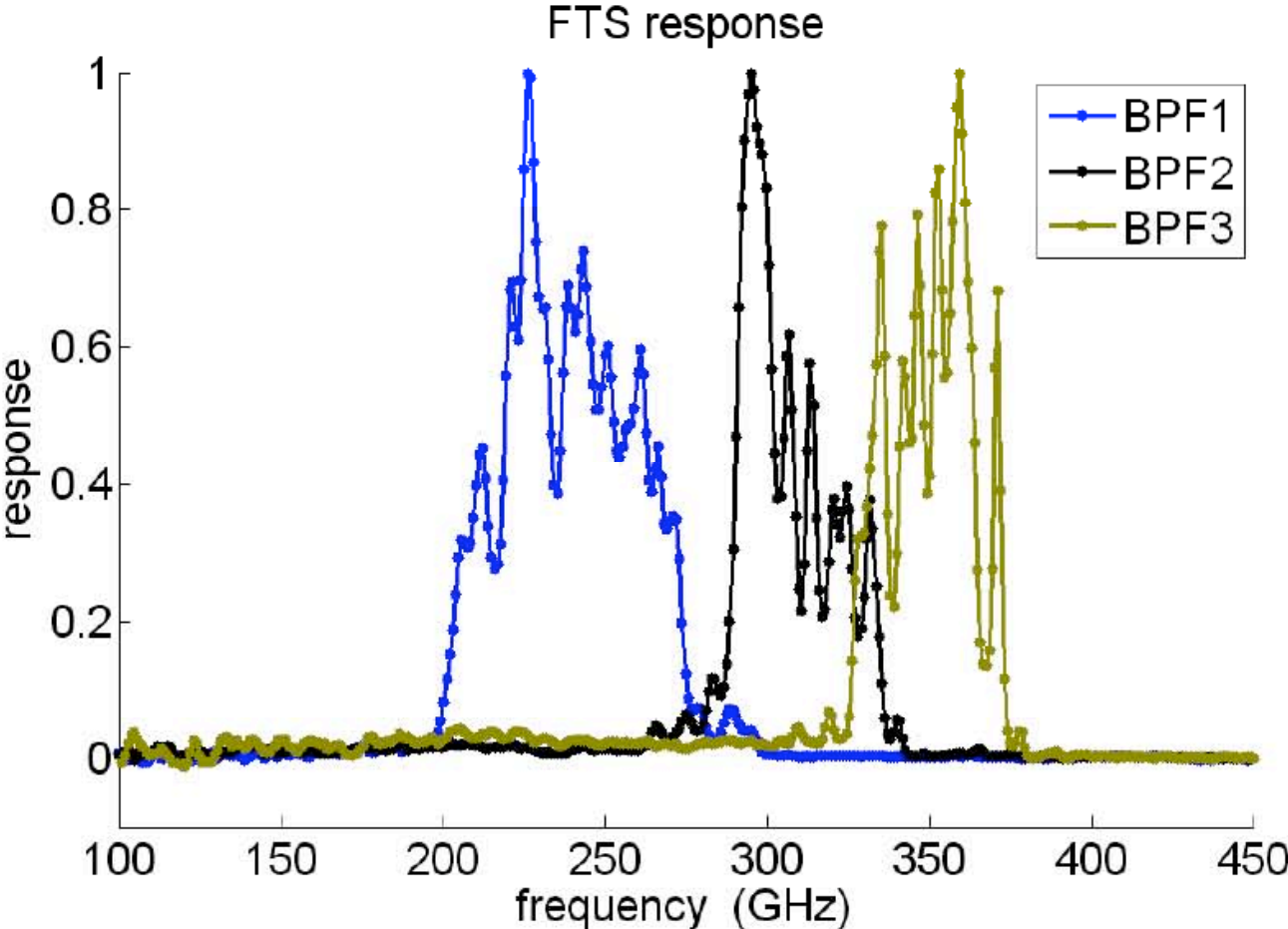
Simplified Analog Readout



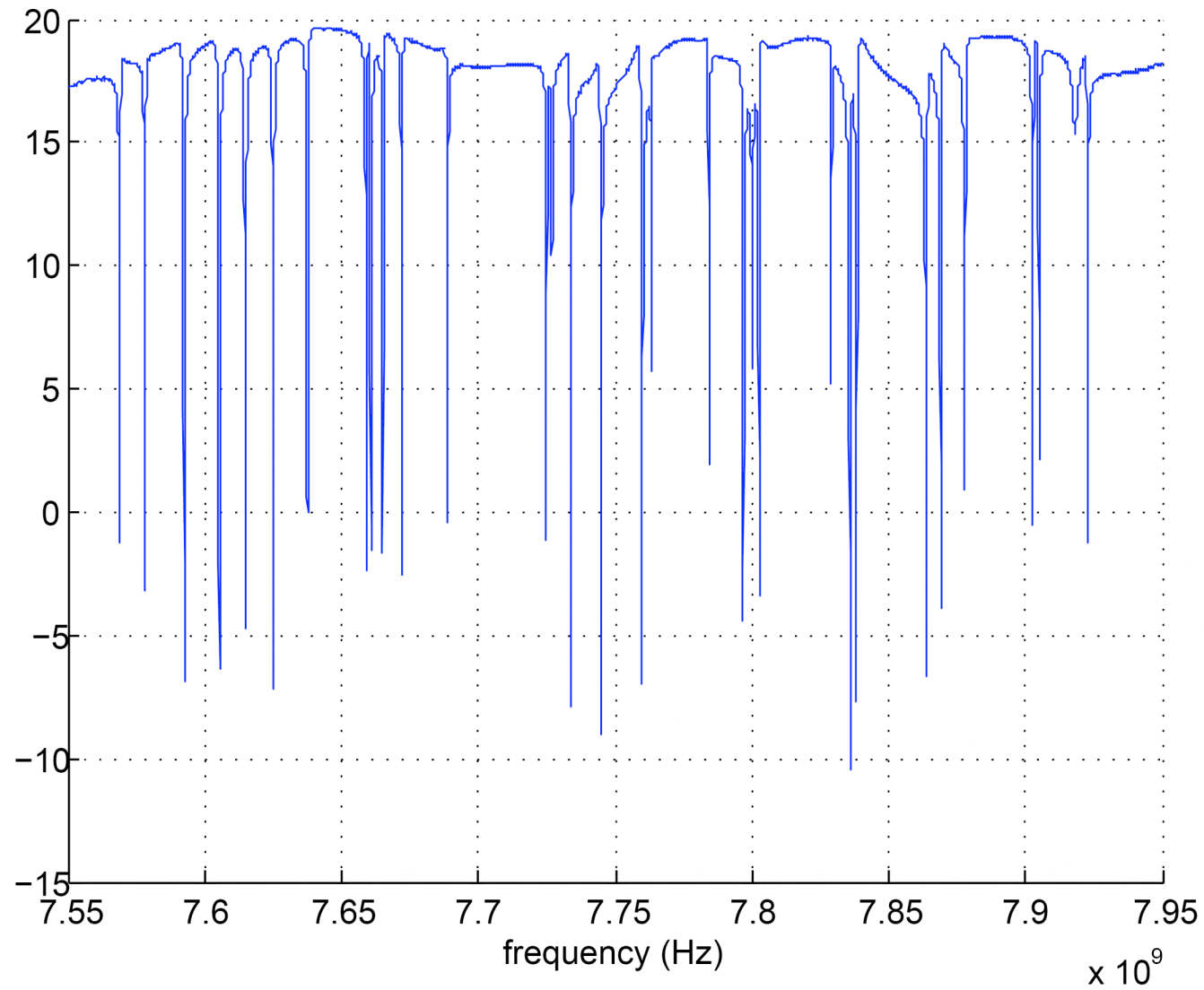
Software Radio for multiple channel readout



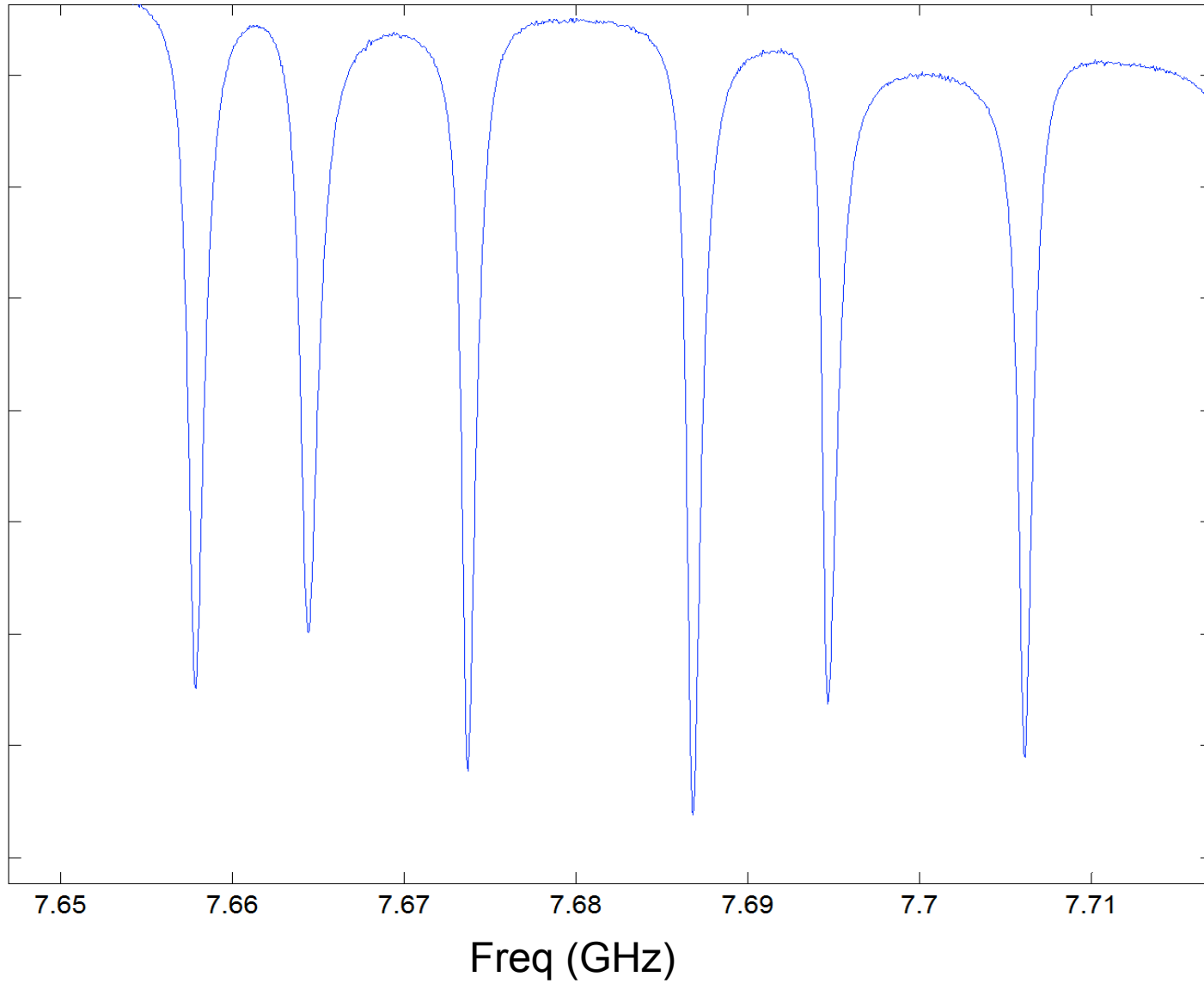
Bandpass Filters

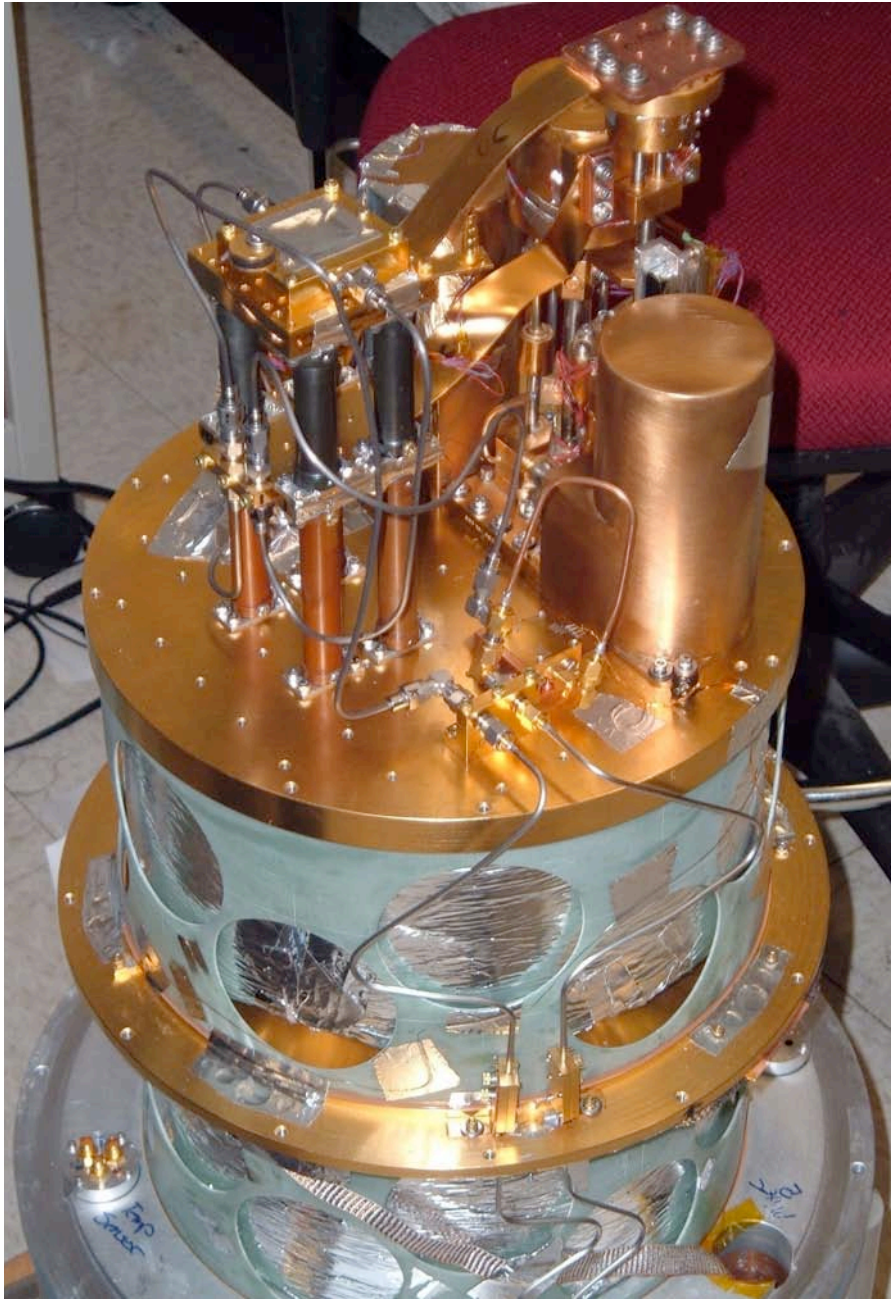


Resonances – all 32 detected



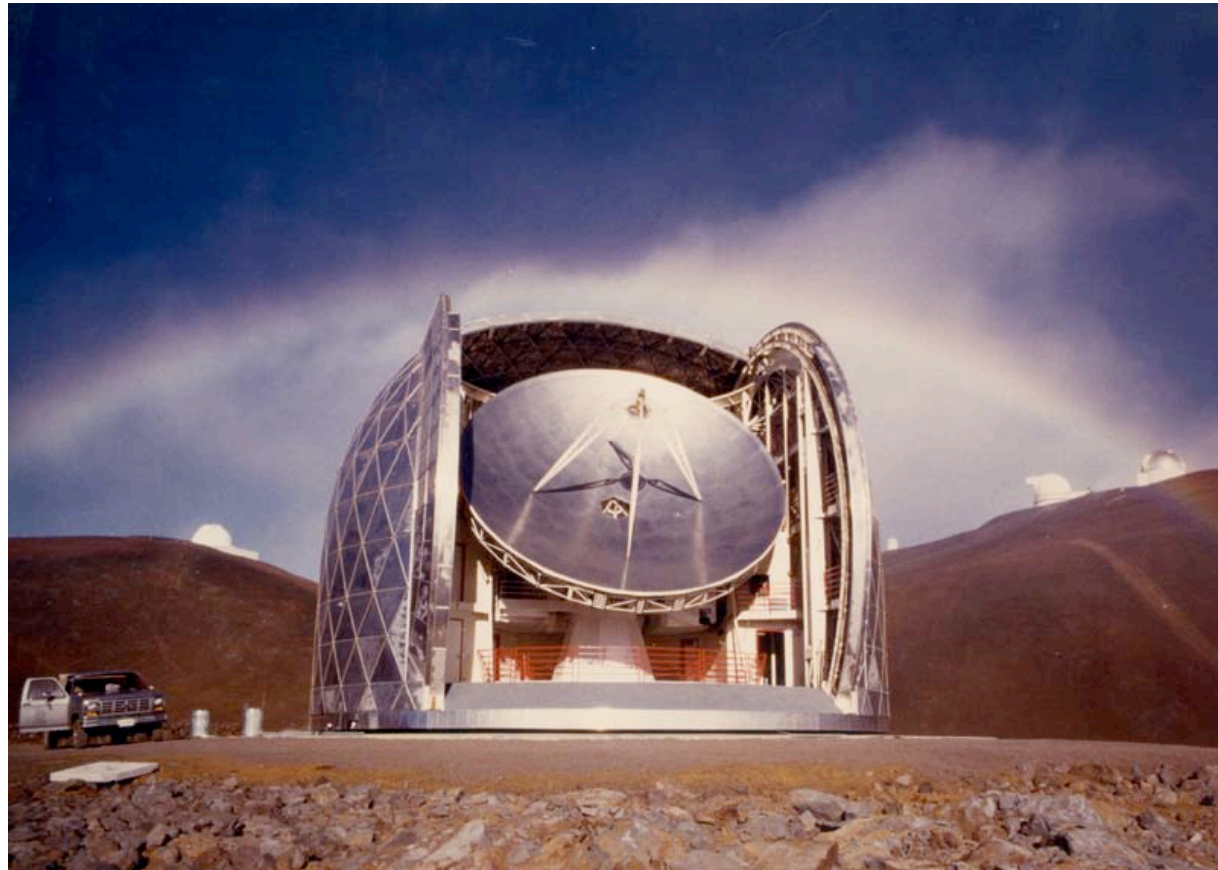
Close-up of resonances





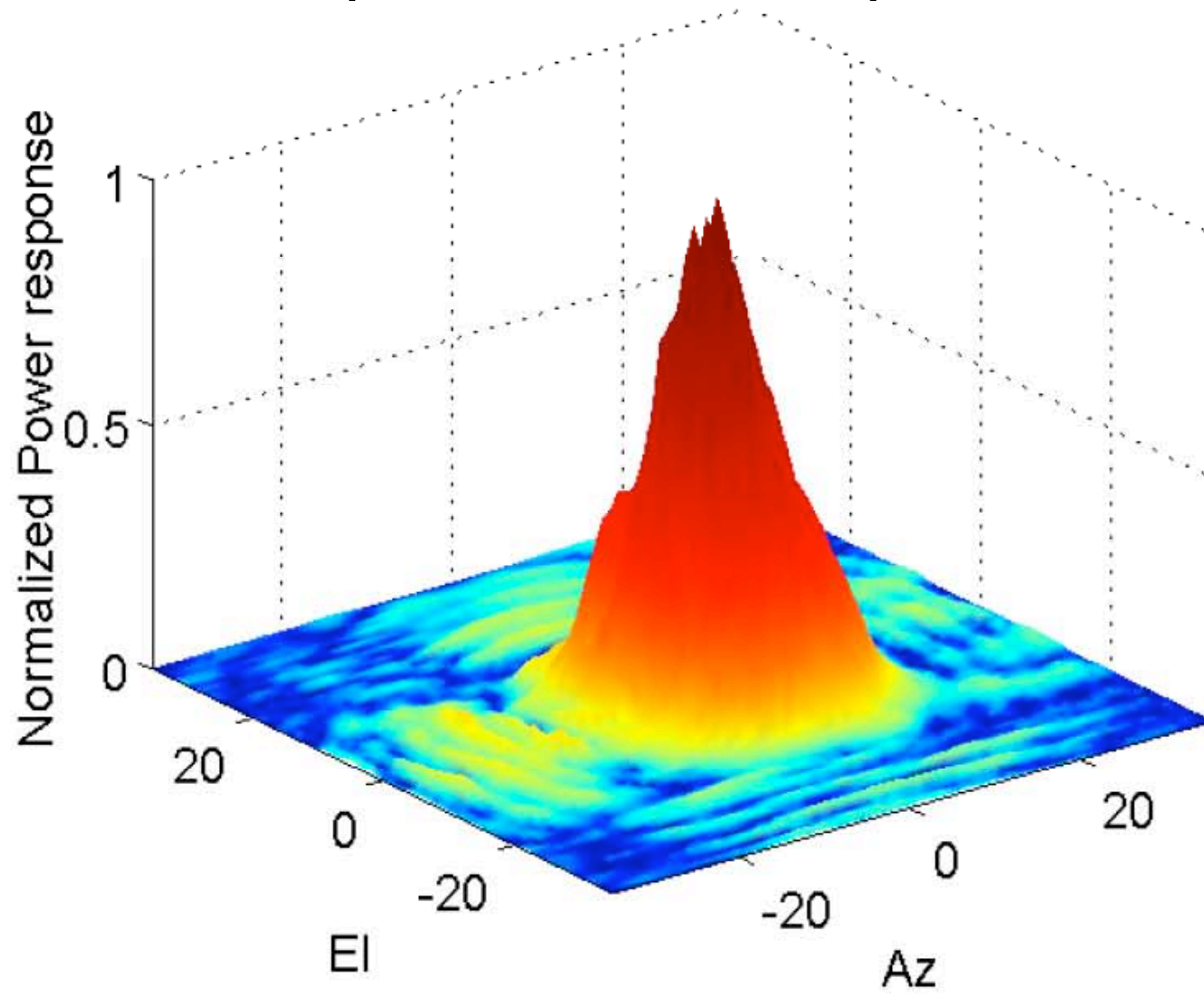
FTS and beam mapping to begin next week

MKID
Demonstration
Camera on the
CSO –
ETA March
2007





Expected Beam Map



MKID Basics

