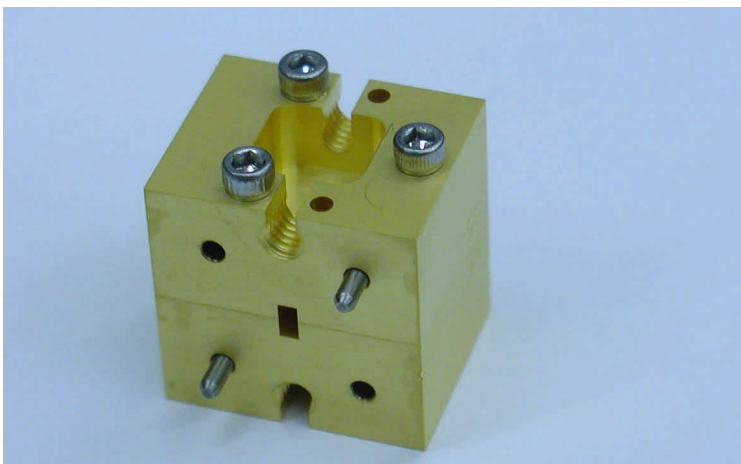
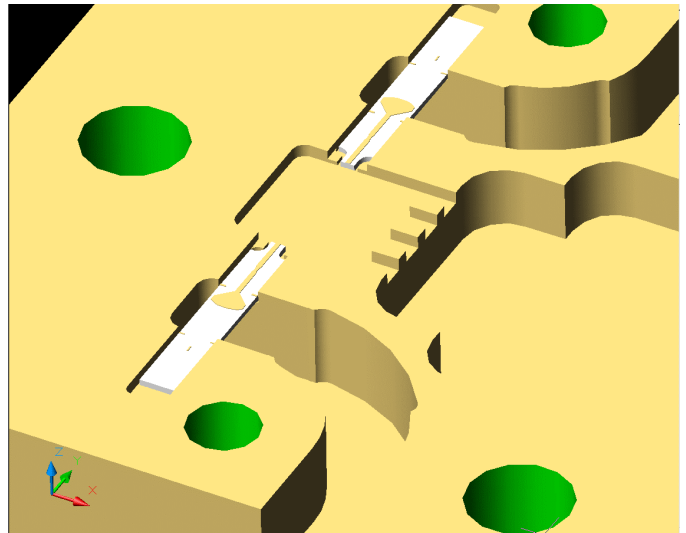
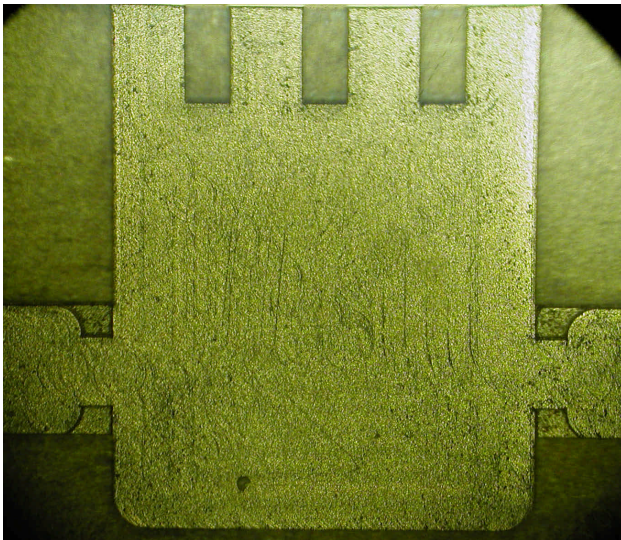
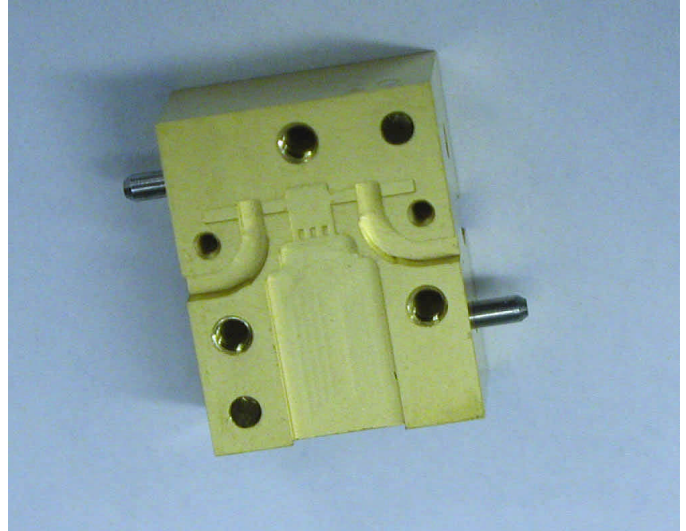
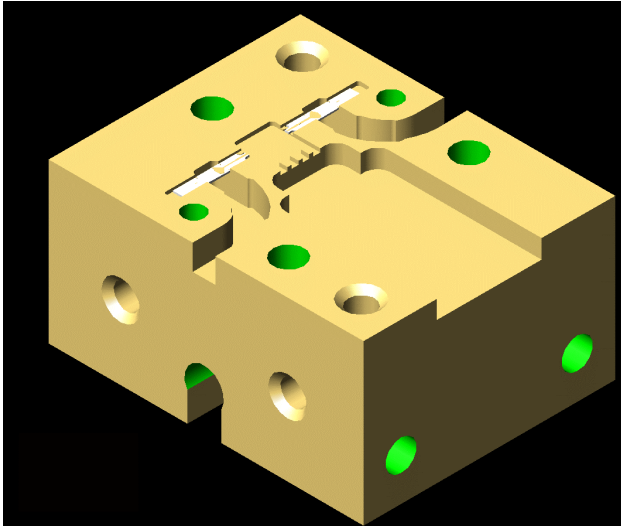


WR11 and WR8 Update

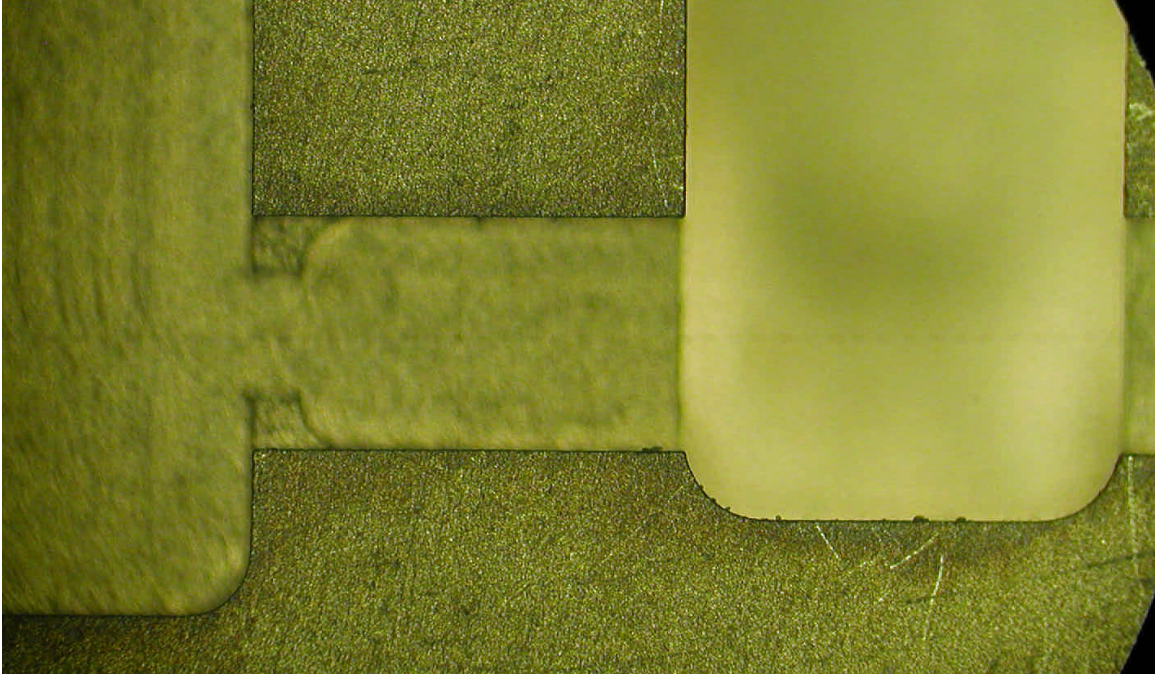
June 20, 2005

Jacob W. Kooi

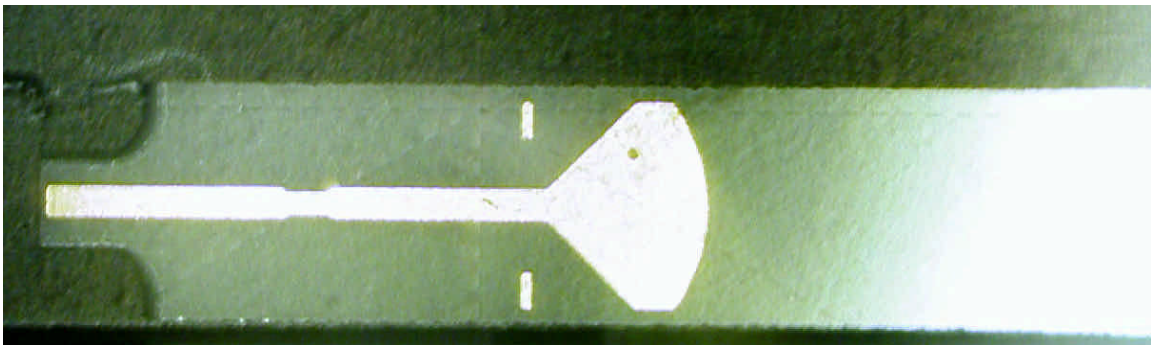
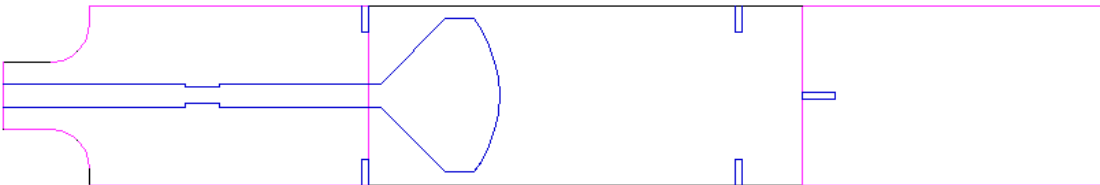
WR-11



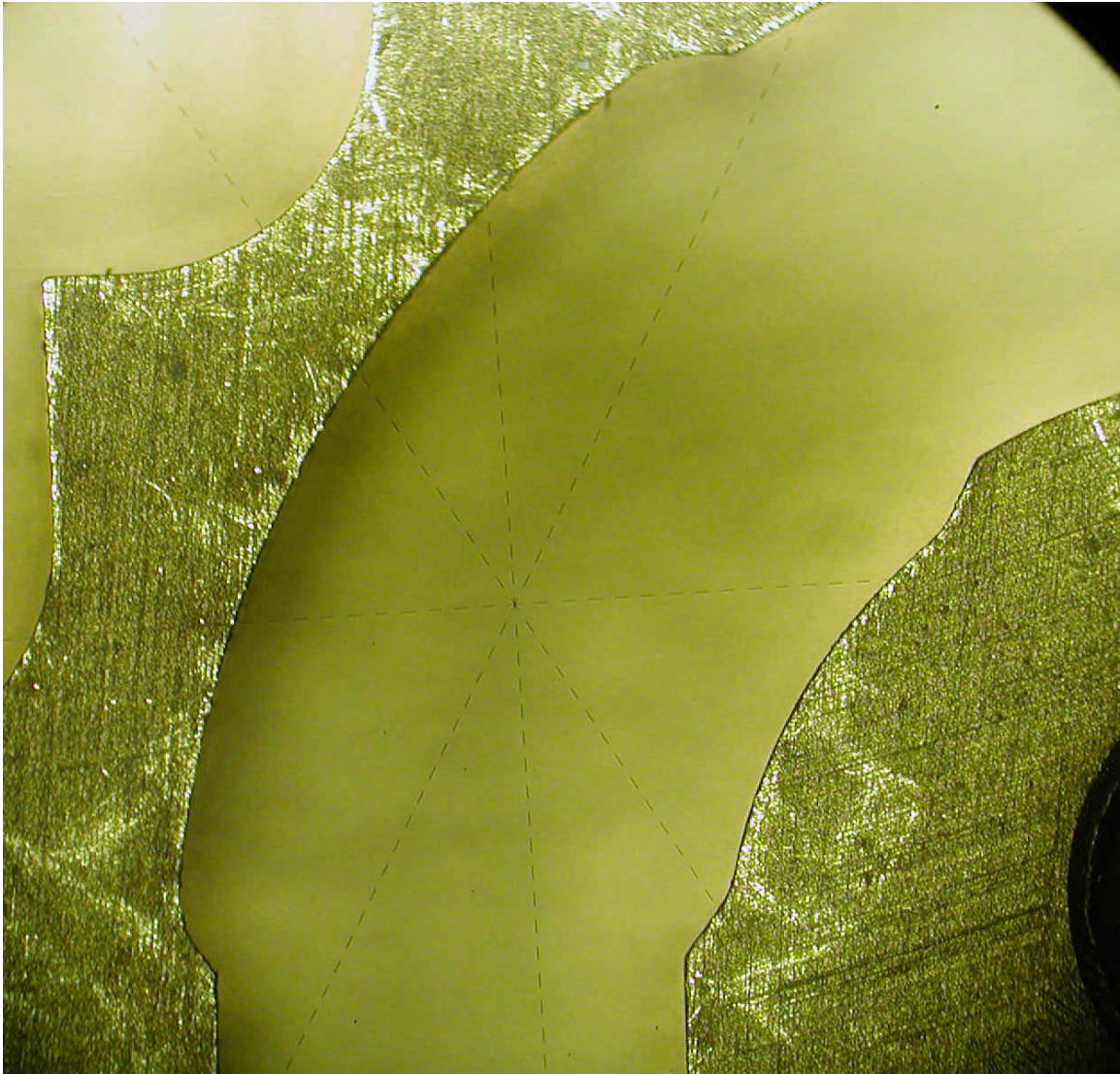
WR-11 block layout Waveguide
Size: 55 x 110 mils



WR-11 backshort detail. Theoretical BS Size: 10.0 mils, mean measured BS Size: 8.70 mils. Theoretical channel width: 29mils, mean measured channel width: 29.5 mils.

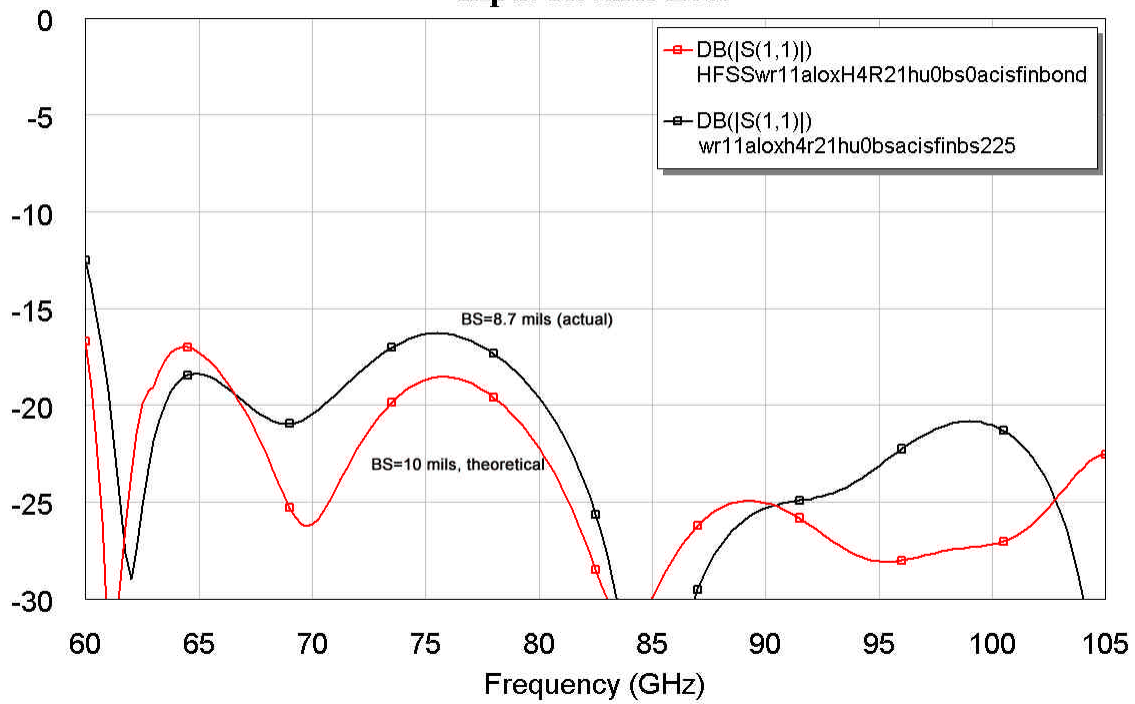


WR-11 Probe: Design width: 27.0 mils, measured width: 26.8 mils.
Material: 4 mil thick Alumina. Length: 165 mils.

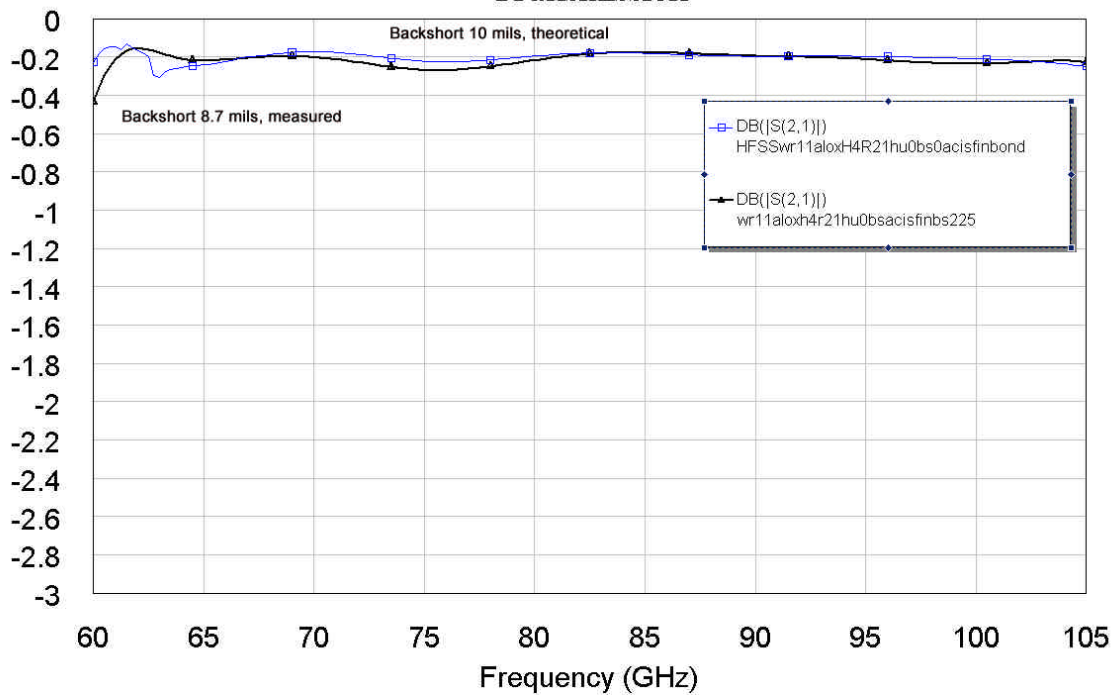


WR-11 WG step Detail

Input Return Loss



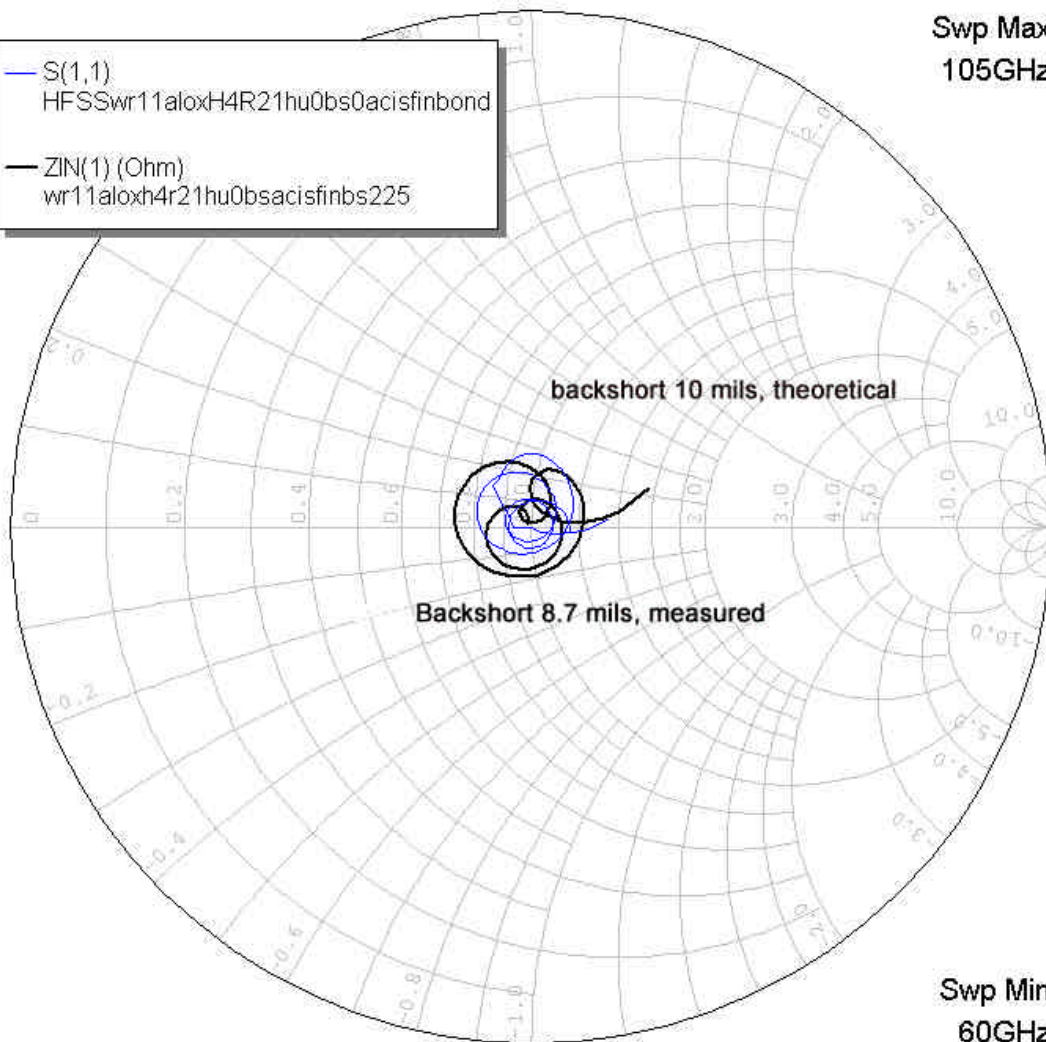
Transmission



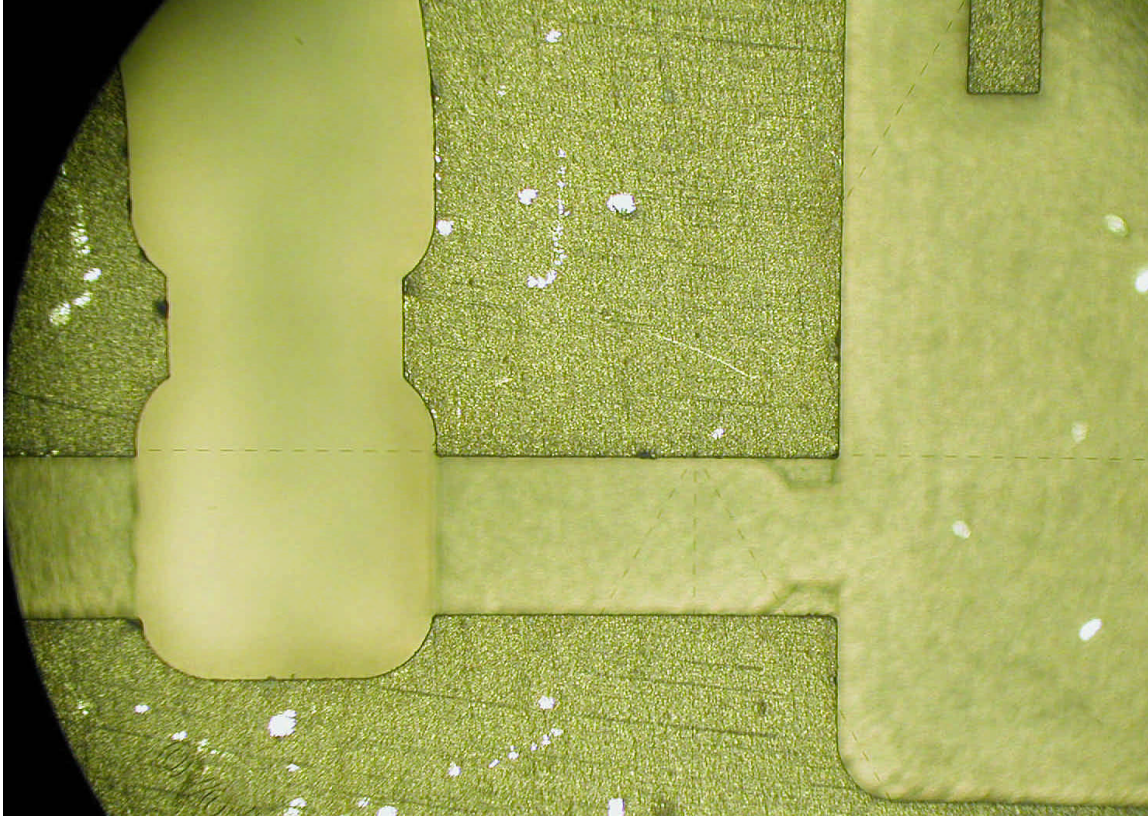
S11

Swp Max
105GHz

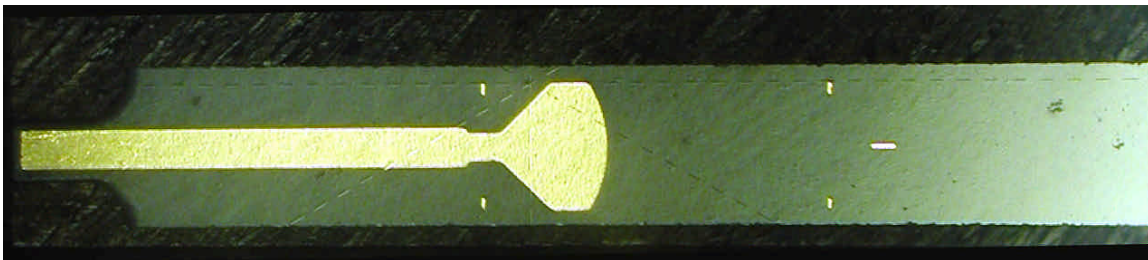
- S(1,1)
HFSSwr11aloxH4R21hu0bs0acisfinbond
- ZIN(1) (Ohm)
wr11aloxh4r21hu0bsacisfinbs225



WR-8

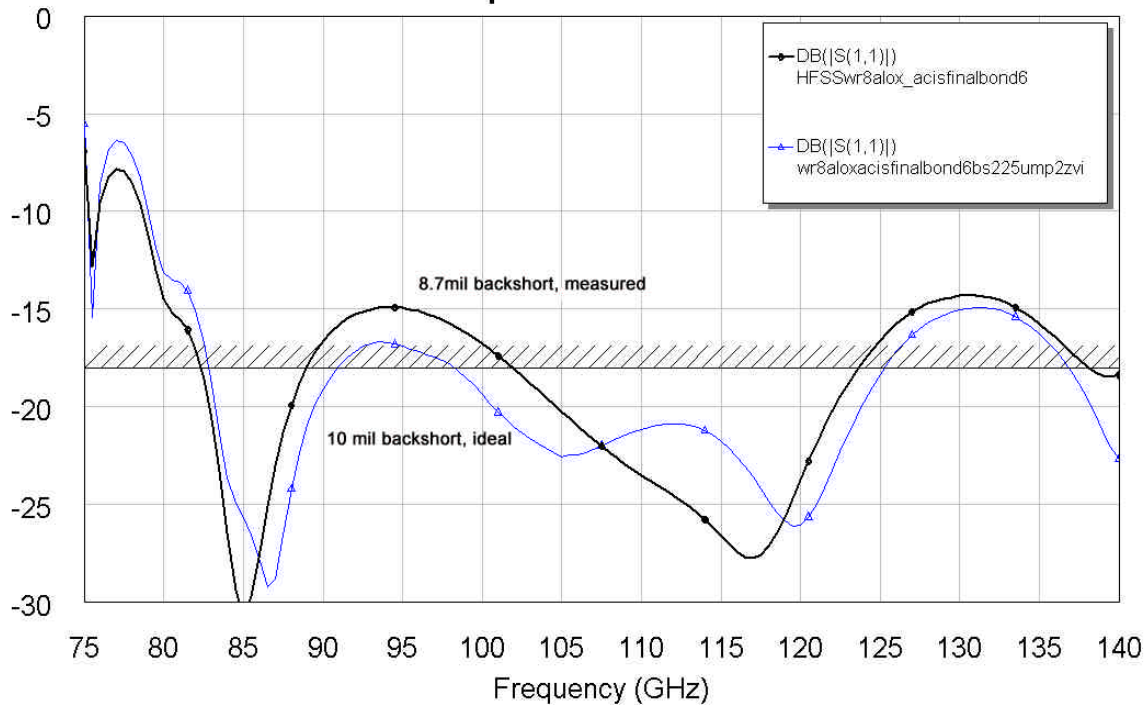


WR-8 Backshort detail. Theoretical BS Size: 10.0 mils, mean measured BS Size: 8.66 mils. Theoretical channel width: 21 mils, mean measured channel width: 21.1 mils.

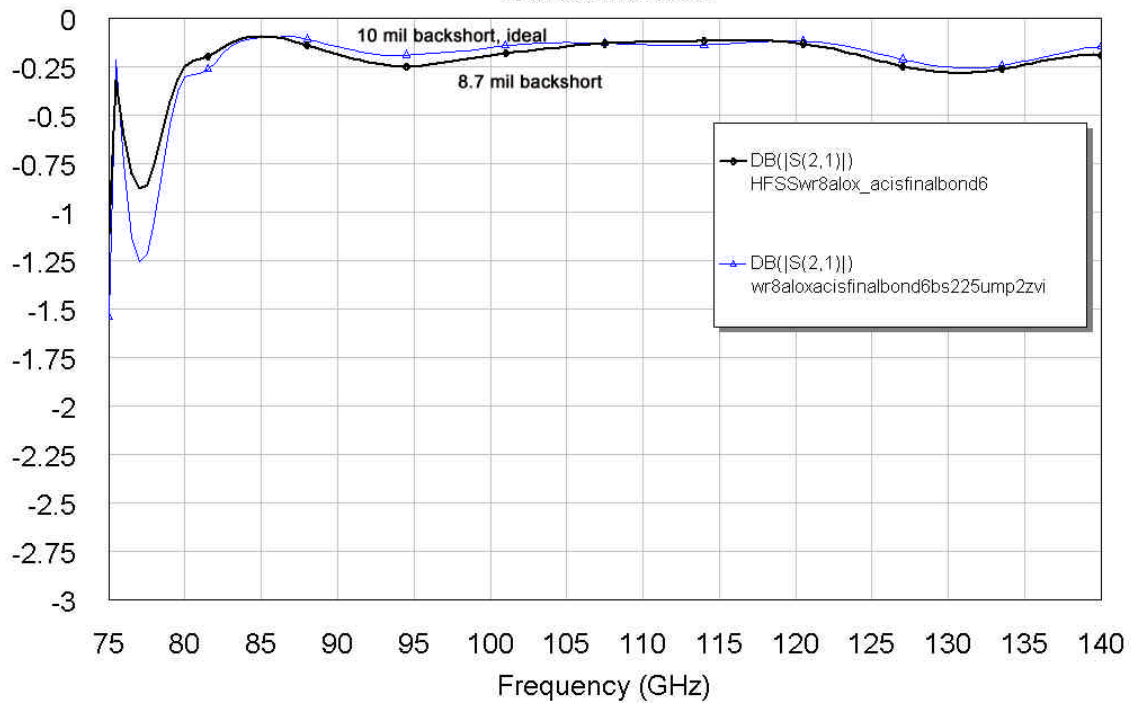


WR-8 Probe. Design width: 19.0 mils, measured width: 18.7 mils. Material: 4 mil thick Alumina. Length: 150 mils.

Input return Loss



Transmission



S11

