

A 665 GHz WAVEGUIDE RECEIVER USING A TUNED $0.5\mu\text{m}^2$ Nb/ AlO_x /Nb SIS TUNNEL JUNCTION.

J. W. Kooi¹, M. S. Chan¹, H. G. LeDuc², and T. G. Phillips¹

1- Caltech Submillimeter Observatory Division of Physics, Mathematics and Astronomy California Institute of Technology, Pasadena, California 91125

2- Center for Space Microelectronics Technology, Jet Propulsion Laboratory

Abstract

We report recent results on a 580-740 GHz SIS heterodyne receiver employing a tuned $0.50\mu\text{m}^2$ Nb/ AlO_x /Nb SIS tunnel junction. The receiver has been successfully installed at the Caltech Submillimeter Observatory, Hawaii. Results of an untuned device in the same waveguide block were presented at the fifth International THz Conference. Since the mixer is meant to be operated near the superconducting gap frequency of niobium ($2\Delta/h \approx 690$ GHz), special has been taken to minimize the absorption loss in the rf matching network. To this effect we propose the use of a RF matching network that constitutes a hybrid between the well know "end-loaded" stub and radial stub matching networks. We have measured uncorrected DSB receiver temperatures as low as 160K from 680- to 702 GHz, 200K at 725GHz and 120K from 585-640 GHz. The uncorrected mixer noise temperature at 702 GHz is about 125K, of which 62K can be directly contributed to the front end optics loss. Mixer conversion loss at 702 GHz is 7dB, of which $\approx 0.9\text{dB}$ is due to the absorption loss in the Nb film. This results in a corrected mixer noise temperature of 63K, ≈ 1.7 times the quantum noise limit.

I. INTRODUCTION

THE results discussed here were achieved by using a $0.56\mu\text{m}^2$ Nb/ AlO_x /Nb SIS tunnel junction with high quality circular non-contacting backshort and E-plane tuners[1-3] in a full height waveguide mount. The heterodyne receiver has been successfully installed at the Caltech Submillimeter Observatory (CSO) on Mauna Kea in Hawaii.

The "end-loaded" RF matching network has been used very effectively below 600 GHz[4-7]. The "end-loaded" stub puts a small section transmission line in series with the junction. This results in the transformation of the complex junction admittance, to the real axis of the Smith Chart, R_s . As the frequency increases the stub length approaches $\pi/4$, which reduces R_s to very small values [2]. This is a serious drawback of the "end-loaded" stub. For frequencies above difficult to transform R_s to match the probe impedance over a reasonable bandwidth (Fig. 1). An alternative approach is the Radial Stub matching network[2, 8]. It places an inductance in parallel with the junction which resonates out the large junction capacitance. It's simplicity makes it low loss but unfortunately quite narrow band as well. Since the mixer is meant to be operated near the superconducting gap frequency of niobium ($2\Delta/h \approx 690$ GHz), special has been taken to minimize the absorption loss in the rf matching network. To this effect we propose the use of a RF matching network that constitutes a hybrid between the well know "end-loaded" stub and radial stub matching networks. In figure 1 we show a photograph of the actual device.

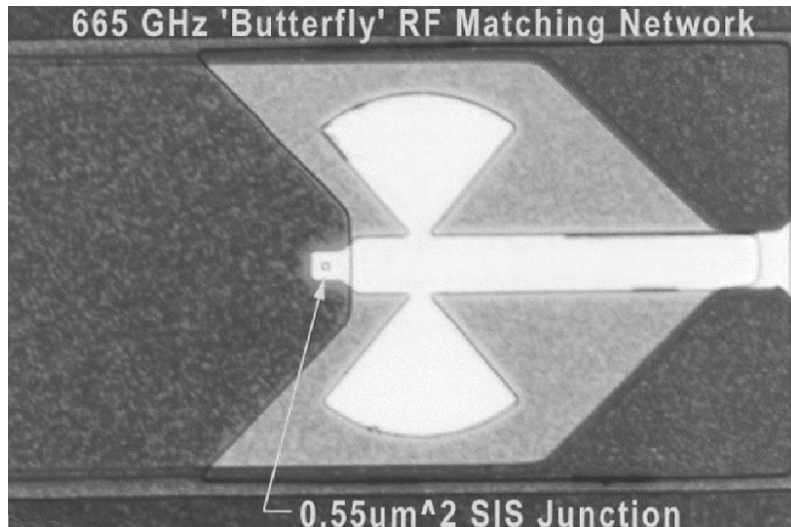


Fig. 1. Fig. 1. 1000 X photograph of the junction and 'butterfly' matching network. The junction size is $0.75 \mu\text{m}$ on a side.

Instead of transforming the junction impedance to the real axis of the Smith chart, as is done with the 'End-Loaded' stub, we purposely overshoot the real Axis. This makes the transformed impedance slightly inductive, which when presented with a shunt capacitance (Parallel Radial stubs) transforms the impedance to $\approx 3.5 \text{ Ohm}$. A one section quarter wave transformer is then used to transform it to the desired waveguide embedding impedance. We hope to present a more detailed analyses in a future paper.

The advantages of this kind of matching scheme are several. First, The 'End-loaded' stub length can be extended beyond $\pi/4$, which eases the constraints on the photolithography. Secondly, There is no large discontinuity as with the traditional 'End-loaded' stub matching network at these frequency's. The latter greatly simplifies RF circuit models. And lastly the circuit performance of both the 'End-loaded' stub and 'Butterfly' matching networks are very similar, as one might expect (calculated, but not shown in this paper).

II. 580-740 GHz GHz RESULTS AND DISCUSSION

The 702 GHz pumped/unpumped I-V curves and hot(295K)/cold(80K) total power response are shown in Figure 3. The Shapiro steps were carefully suppressed by adjusting the magnetic field. Highest sensitivity is achieved by operating of the first Josephson null. With the receiver tuned for maximum total power, the slope of the pumped I-V curve is nearly zero indicating that the junction capacitance is effectively tuned out. The IF coupling efficiency in this case is quite poor however, which is readily observed by the IF passband ripple. De-tuning[9] the receiver to get a positive sloped I-V curve and subsequent finite IF impedance improves the receiver noise temperature by as much as 15%.

To further understand the breakdown of the measured 160K DSB receiver noise temperature shown in Figure 3, we employed a technique described by Blundell/Feldman *et al.* [10, 11]. By plotting the total IF power as a function of input load temperature for different values of LO drive level we obtained an equivalent front end receiver noise temperature of

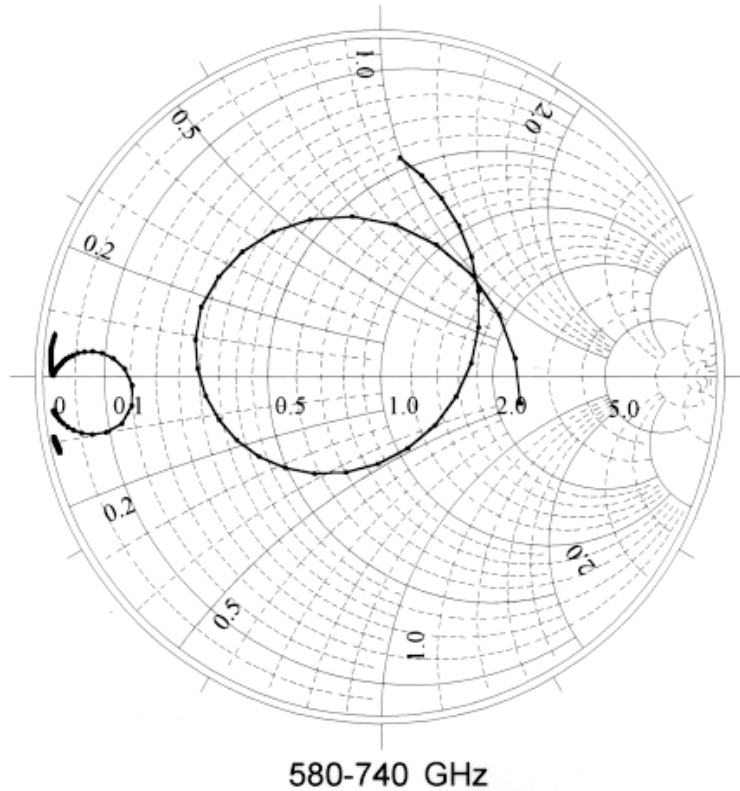


Fig. 2. Fig. 2. 'Butterfly' impedance plot normalized to 50Ω .

62 ± 3 Kelvin, Shot noise calculated IF contribution of $\approx 5K$ and a corrected mixer noise temperature of $\approx 63K$, or about 1.7 times the quantum noise limit.

The frequency response of the 665 GHz receiver is shown in figure 4.

Data was taken "in situ" at the Caltech Submillimeter Observatory in Hawaii. A $10\mu m$ beamsplitter was used in for all the measurements. The multipliers were provided by RPG-Physics[12]. Unfortunately the SIS devices have a current density 40% lower than the $10kA/cm^2$ design value. This has, due to the lower junction capacitance, shifted the resonance up in frequency. The effect of this is twofold. First, the sensitivity is reduced by 3dB at 660 GHz as the tuners can no longer provide a match to the input impedance of the RF matching network (passes through the forbidden region on the Smith chart). And secondly the conjugate input impedance of the RF matching network tracts the embedding impedance of the waveguide mount, which results in a essentially tunerless receiver below 690 GHz.

An upgrade is planned during the August CSO engineering shutdown. It is expected that this will both eliminate the resonance and much reduce the instantaneous bandwidth.

III. CONCLUSION

A SIS heterodyne quasi-particle mixer has been developed for the 580-720 GHz submillimeter band. The mixer employs a tuned $0.56 \mu m^2$ Nb/ AlO_x /Nb tunnel junctions mounted

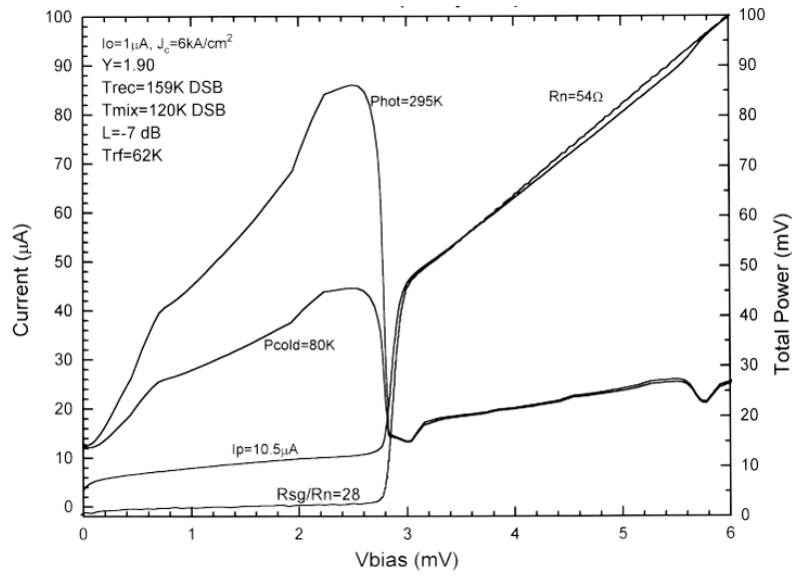


Fig. 3. Fig. 3. 702 GHz I-V / Total power response The optimum receiver noise temperature was $160\text{K} \pm 2\text{K}$ DSB with an corrected mixer noise temperature of $\approx 63\text{K}$. The mixer exhibits about 7dB of conversion loss, of which $\approx 0.9\text{dB}$ is due to absorption loss in the niobium film.

in a full height waveguide mixer.

Above 500 GHz it becomes increasingly difficult to accurately model and fabricated the well known 'End-loaded' stub matching network. In addition, since the mixer is meant to

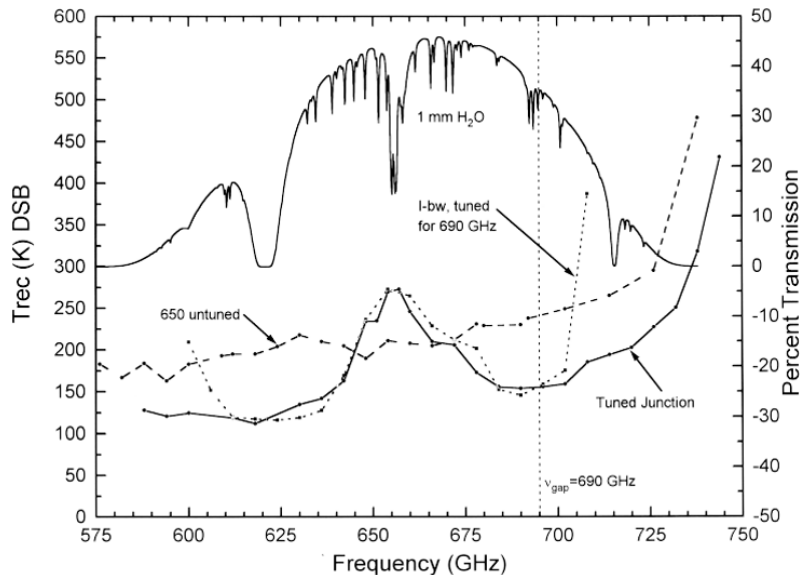


Fig. 4. Fig.4 Frequency response of the 665 GHz receiver discussed (solid). Shown are the receiver noise temperatures (dashed line) for a untuned junction in the same mixer block (1994) and Instantaneous bandwidth (dotted).

be operated near the superconducting gap frequency of niobium ($2\Delta/h \approx 690$ GHz), special has been taken to minimize the absorption loss in the rf matching network. To solve some of the problems we propose a variation, namely the 'Butterfly' matching network, which is essentially a hybrid between the well know "end-loaded" stub and radial stub matching networks.

We have measured uncorrected DSB heterodyne receiver noise temperatures as low as 160K from 680- to 702 GHz, 200K at 725GHz and 120K from 585-640 GHz. The uncorrected mixer noise temperature at 702 GHz is about 125K, of which 62K can be directly contributed to the front end optics loss. Mixer conversion loss at 702 GHz is 7dB, of which ≈ 0.9 dB is due to the absorption loss in the Nb film. This results in a corrected mixer noise temperature of 63K (≈ 1.7 times the quantum noise limit).

IV. ACKNOWLEDGEMENTS

We wish to thank Jonas Zmuidzinas for helpful discussions, Dave Miller for help with the optics measurements, Mei Bin with her expertise on the FTS measurements, Keith Horvath (Hi Tech Enterprises) for his superb craftsmanship on making the mixer block, Peter and Rüdiger Zimmerman (RPG-Radiometer) for their excellent work on the 580-660 GHz and 650-740 GHz multipliers, and Kooi thanks his wife for her faithful support. Work on high frequency receivers at Caltech is supported in part by NASA grant# NAGW-107 and NSF grant# AST93-13929.

REFERENCES

- [1] B.N. Ellison and R.E. Miller, "A Low Noise 230 GHz SIS Receiver," *Int. J. IR and MM Waves*, Vol. 8, 609-625, 1987
- [2] J.W. Kooi, C.K. Walker, H.G. LeDuc, T.R. Hunter, D.J. Benford, and T.G. Phillips, "A Low Noise 665 GHz SIS Quasi-Particle Waveguide Receiver," *Int. J. IR and MM Waves*, Vol. 15, No. 3, 477-492, 1994.
- [3] A. R. Kerr, "An Adjustable Short-Circuit for Millimeter Waveguides," Electronics Division Internal Report No. 280, National Radio Astronomy Observatory, Charlottesville, VA 22903, July 1988.
- [4] J. W. Kooi, M. Chan, B. Bumble, T. G. Phillips, "A low noise 345 GHz waveguide receiver employing a tuned $0.50 \mu\text{m}^2$ Nb/AlO_x/Nb tunnel junction," *Int. J. IR and MM Waves*, Vol. 15, No. 5, May 1994.
- [5] T.H. Büttgenbach, H.G. LeDuc, P.D. Maker, T.G. Phillips, "A Fixed Tuned Broadband Matching Structure for SIS Receivers," *IEEE Trans. Applied Supercond.*, Vol. 2, No. 3, pp. 165-175, 1992.
- [6] G. de Lange, C.E. Honingh, M.M.T.M. Dierichs, H.H.A. Schaeffer, R.A. Panhuyzen, T.M. Klapwijk, H. van de Stadt, M.W.M. de Graauw, "A low noise 410-495 GHz Nb/Al₂O₃/Nb SIS waveguide mixer", *IEEE Trans. Appl. Supercond.*, 3, 2613 (1993)
- [7] S. Haas, C.E. Honingh, D. Hottgenroth, K. Jacobs, J. Stutzki, "Low Noise Broadband Tunerless Waveguide SIS Receivers for 440-500 GHz and 630-690 GHz," *Int. J. IR and MM Waves*, Vol. 17, No. 3, 1996
- [8] P. Febre, W.R. McGrath, P. Batelaan, B. Bumble, H.G. LeDuc, S. George, P. Featrier, "A Low-Noise SIS Receiver Measured from 480 GHz to 650 GHz using Nb Junctions with Integrated RF Tuning Circuits," *Intl. J. IR and MM Waves*, Vol 15, No.6, June 1994.
- [9] J. W. Kooi, M. Chan, B. Bumble, T. G. Phillips, "230 and 492 GHz Low Noise SIS Waveguide Receivers Employing Tuned Nb/AlO_x/Nb Tunnel Junctions," *Int. J. IR and MM Waves*, Vol. 16, No. 12, December 1995.
- [10] R. Blundell, R.E. Miller, and K.H. Gundlach, "Understanding Noise in SIS Receivers," *Int. J. IR and MM Waves*, Vol 13, No. 1, pp. 3-26, 1992.
- [11] Q. Ke, and M.J. Feldman, "A Technique for Accurate Noise Temperature measurements for the Superconducting Quasiparticle Receiver," *Fourth international Symposium on Space Terahertz technology*, UCLA, 1993.
- [12] R. Zimmerman, T. Rose, T.W. Crowe, T.W. Grein, "An All-Solid-State 1 Thz Radiometer For Space Applications, Submitted to the 6th *Int. Symp. on Space THz Technology*, Caltech, Ca, March 1995.